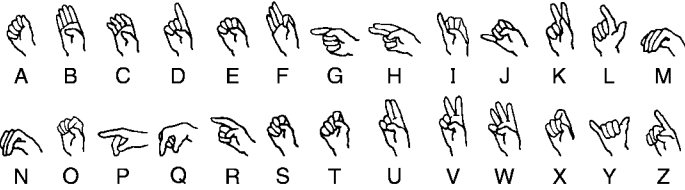




When Jesus' parents saw Him, they were astonished. His mother said to Him, "Son, why have You treated us like this? Your father and I have been anxiously searching for You." How did Jesus reply?

Use the sign language code to fill in the blanks.

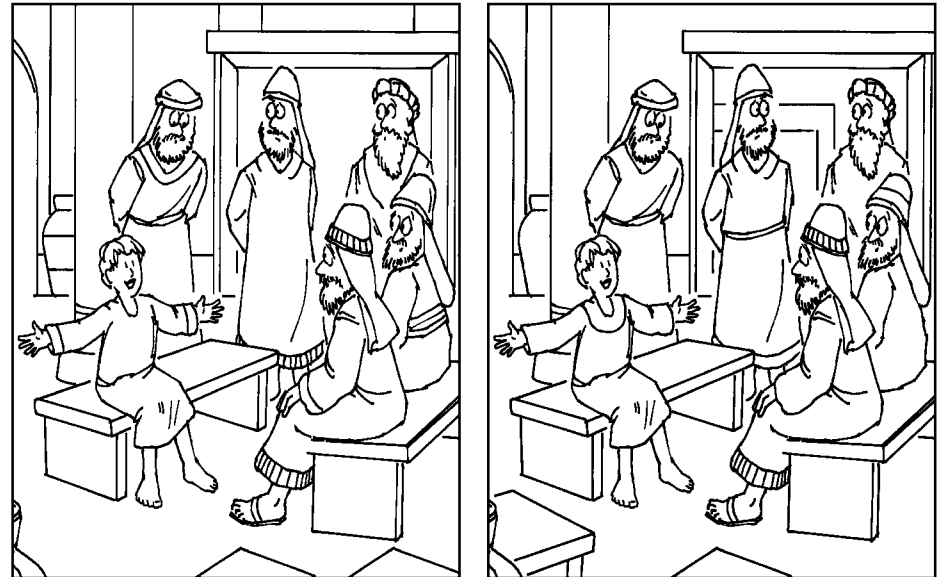


“ \_\_\_\_\_  
\_\_\_\_\_  
\_\_\_\_\_  
\_\_\_\_\_?  
\_\_\_\_\_  
\_\_\_\_\_  
\_\_\_\_\_  
\_\_\_\_\_  
\_\_\_\_\_  
\_\_\_\_\_  
\_\_\_\_\_?  
\_\_\_\_\_?”

# Jesus in the Temple

Every year Jesus' parents went to Jerusalem for the Festival of the Passover. When Jesus was 12 years old, He went with them. What happened when the festival was over?

Find 15 differences between the 2 pictures below.



While his parents were returning home, Jesus stayed behind in Jerusalem, but they were unaware of it. Thinking He was in their company, they traveled on for a day.



Enter your **SECRET CODE** to unlock games @ [games.childrensbulletins.com](http://games.childrensbulletins.com) **SECRET CODE**  
**W05051**

Jesus' parents couldn't find Him. They began looking among their friends and relatives, and eventually went back to Jerusalem.

What happened?



Unscramble the food names. Use the numbered letters to fill in the blanks.

LPAPE	1	17	IWASNDCH	5	15	6
ADEBR	2		NOCR	10	11	
ANCYD	3	13	KLIM	9	7	16
HIFS	4	12	TORCAR	14	8	

1	4	8	2	14	8	6	14	2	2	
3	1	13	12	8	6	2	13			
u										
4	11	5	3	6	15	9	15	5		
8	6	2	8	2	9	17	7	2		
u									g	
10	11	14	8	12	12	15	8	8	15	5
g										
1	9	11	5	8	6	2				
8	2	1	10	6	2	14	12			
g										
7	15	12	8	2	5	15	5			
8	11	8	6	2	9	1	5	3		
g										
1	12	16	15	5	8	6	2	9		
qu										
2	12	8	15	11	5	12				

How did the people at the temple react to Jesus?

Fit the words in the list below into the spaces to complete the sentence and find out. (Some words need to be split between 2 words below.)

VERY      SAME      SAW  
 EAR      THIS      DIM  
 NEW      STAND

